



ARB SLIMLINE 100

| | |
|--------------------------------|---|
| Date | Feb 2025 |
| Description | ARB Slimline 100 – 12V/100Ah Lithium Iron Phosphate Battery |
| Part numbers and Prices | Table below |
| Availability date | Summer 2025 |

OVERVIEW

ARB is excited to announce a new level of auxiliary power with the launch of the ARB Slimline 100 battery. It features an integrated DC-DC charger, along with a range of vehicle-specific mounting bracket kits and wiring kits.

As 4WD owners increasingly add electrical appliances like fridges and coffee machines to their vehicles, there is a growing risk of depleting the main battery due to frequent power use. This has led to a rising demand for auxiliary battery systems.

Currently, ARB offers auxiliary battery solutions with options for under-bonnet, surface and underbody installations. However, finding space for a full-sized dual battery system in modern vehicles is becoming increasingly difficult.

The ARB Slimline 100 battery is an ideal choice for auxiliary battery systems, featuring lightweight Lithium Iron Phosphate (LiFePO₄) cells. It delivers high power capacity, advanced charging and

robust safety features. The battery also supports easy monitoring via a mobile app, ensuring reliable power while preserving the main vehicle battery's health for an enhanced off-road experience.

To support installation, we developed a range of vehicle specific mounting brackets and universal wiring looms, both sold separately. These accessories, combined with the built-in DC-DC charger, facilitate a straightforward installation and streamlined fitting process.

The ARB Slimline 100 and its associated components are now available for order, with the official public launch scheduled for early February 2025.

KEY FEATURES AND BENEFITS

1. Power and Capacity:

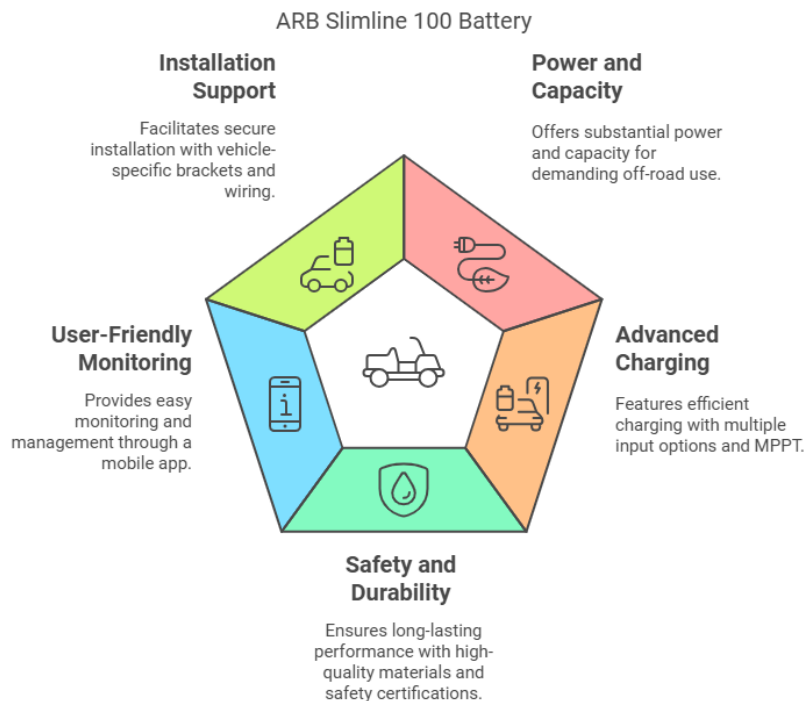
- 100Ah Capacity (1280Wh): Provides sufficient power for common off-road adventures.
- 200A Discharge for 20 Minutes: Supports devices like 2000W coffee machines or induction cookers.
- Parallel operation: Supports multiple batteries connected in parallel to provide more backup power.

2. Advanced Charging:

- 40A 4-Stage Charging: Efficient and safe charging process.
- Dual Input Options: Accepts alternator and solar inputs.
- Selectable Input Voltage: Compatible with standard and smart alternators.
- MPPT Function: Optimises solar energy utilisation.

3. Safety and Durability:

- High-Quality Lithium Cells: From a leading manufacturer, meeting rigorous standards.
- Certifications: Meets extensive Australia and International standards.
- Integrated Charging System: Ensures optimal battery health and prevents charge mismatches.
- Safety Features: Includes a soft power switch for safe operation and accidental short-circuit during installation.



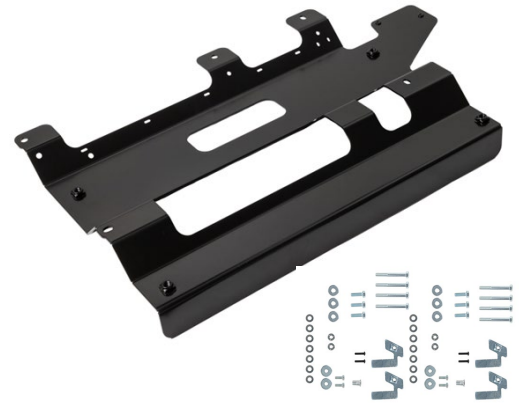
- Replaceable Output Fuse: Easily accessible for maintenance.

4. User-Friendly Monitoring:

- Mobile App: Allows monitoring of battery metrics and error messages for enhanced management.

5. Installation Support:

- Vehicle-Specific Mounting Brackets: Developed by ARB to facilitate secure and efficient installation.
- Wiring Looms: Simplify the integration of the ARB Slimline 100 battery into specific vehicle models.



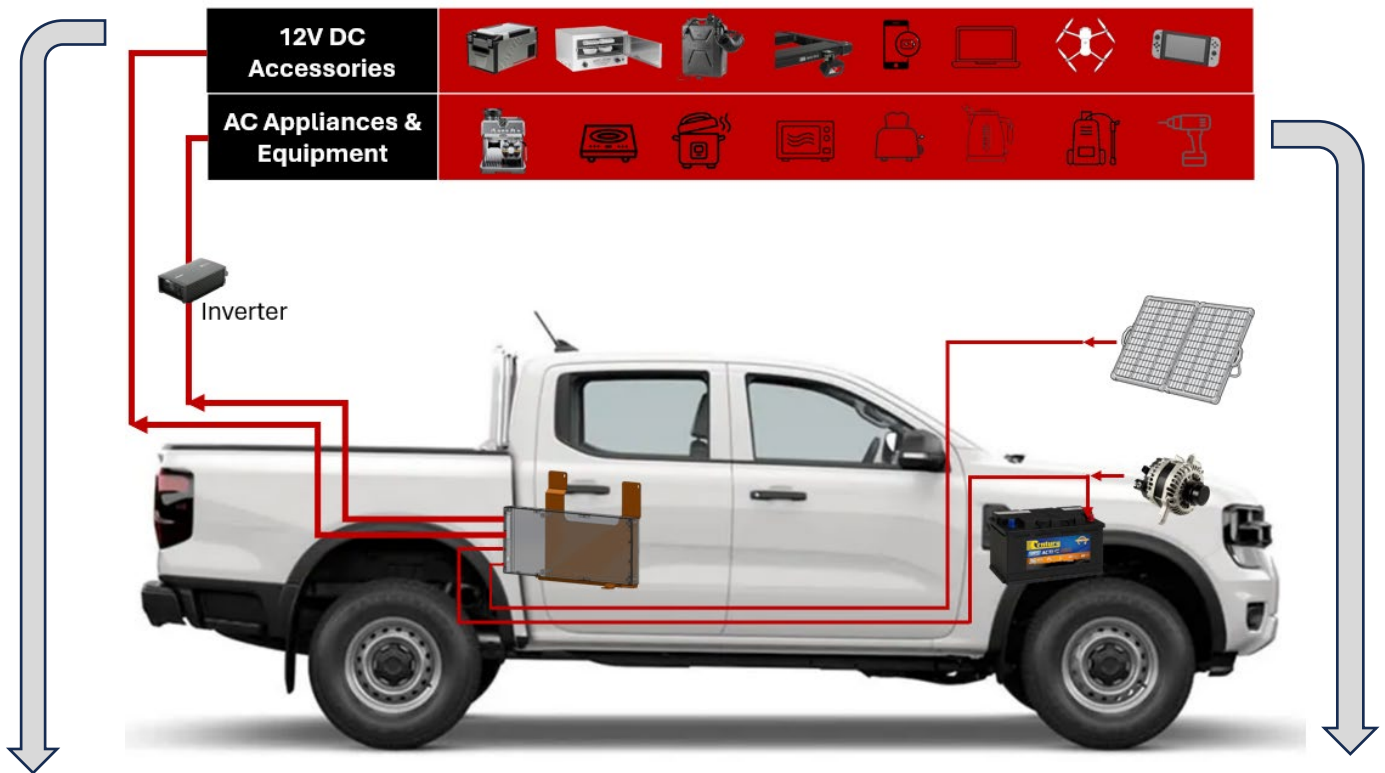
VEHICLE SPECIFIC MOUNTING KITS

There are **several** mounting kits available to support the installation in popular vehicles. Each mounting kit includes an alternator input fused-protected harness. Here are the features and benefits of the mounting kits:

- 3mm steel folded bracket: Durable and sturdy construction.
- Powder-coat finish: Provides a high-quality, corrosion-resistant surface.
- Mounting point for midi fuse: Ensures easy and secure fuse placement for reliable protection.
- Welded nuts for direct battery installation: Simplifies and speeds up the battery installation process.
- Custom designed for specific vehicle: Ensures a perfect fit and optimal performance.
- Installation behind rear seat: Maximises cargo space and keeps components out of sight.
- Can be modified to mount other products (e.g., inverter): Offers flexibility for future upgrades or additional installations.
- Supplied with all required fasteners: Includes everything needed for a hassle-free installation.
- Includes wiring harness from primary battery to secondary battery: Facilitates easy and organised connection.
- Includes fitting instructions: Provides clear guidance for straightforward installation.



POWER CONSUMPTION – ARB SLIMLINE 100 VS AGM BATTERY



| 12V DC Accessories | Continuous Operating Time (hrs) | |
|---------------------------------|---------------------------------|--------------------|
| | AGM 105Ah** | ARB Slimline 100** |
| ARB 44L Zero Fridge Freezer* | 63 | 96 |
| 12V 10A Oven | 5 | 8 |
| 22L Portable Shower (4.5A Draw) | 12 | 18 |
| 40W Auxiliary Light | 17 | 24 |
| 96W Apple MacBook Pro | 7 | 10 |
| Starlink Mini | 11 | 17 |

| Appliance connected to 2kW inverter | Continuous Operating Time (mins) | |
|-------------------------------------|----------------------------------|--------------------|
| | AGM 105Ah** | ARB Slimline 100** |
| 2kW Coffee machine | 6 | 16 |
| 2kW induction cooker | 6 | 16 |
| 1L rice cooker | 19 | 70 |
| 1kW Microwave Oven | 15 | 53 |
| 2kW toaster | 6 | 16 |
| 2.2kW Kettle | 6 | 16 |

*Test conducted on a 44L ZERO fridge freezer. Ambient temperature: 25°C, fridge set to 4°C.

** An Absorbed Glass Mat (AGM) lead-acid battery is recommended to be discharged to 50% by Century Battery, while ARB suggests an 80% depth of discharge to extend its cycle life.

Please note that the information provided is intended for reference purposes only.

PART NUMBERS

| Item | Part Number | Description | |
|---|-------------|--|--|
| Slimline 100 | SLB100A40 | 100Ah SLIMLINE BATTERY | |
| Vehicle Specific Mounting Bracket Kit (Alternator input cable included) | SLB14010 | Slimline Battery Mounting Kit Suit HILUX 15+ | |
| | SLB12020 | Slimline Battery Mounting Kit Suit LC79 SC 07+ | |
| | SLB12010 | Slimline Battery Mounting Kit Suit LC79 DC 12+ | |
| | SLB40010 | Slimline Battery Mounting Kit Suit RANGER 22+ | |
| | SLB38010 | Slimline Battery Mounting Kit Suit NAVARA 21+ | |
| | SLB48010 | Slimline Battery Mounting Kit Suit BT50 DMAX 20+ | |
| Accessories | SLB001 | Slimline Battery Solar Input Harness, 10AWG, 4m, 30A Midi Fuse | |
| | 4300110 | Slimline Output Wire Kit, 8AWG, 4m, 60A Midi Fuse | |
| | UNISBBMK | Slimline Battery Universal Underdrawer Mount Bracket | |
| Spare Parts | 4300100 | Alternator Input Wiring kit, 6AWG, 6m, 60A Midi Fuse | |
| | SLBSP001 | 300A Midi Fuse | |
| | SLBSP002 | 60A Midi Fuse | |
| | SLBSP003 | Fuse Cover with Mounting Screws | |
| | SLBSP004 | Terminal Cover with Mounting Screws | |

FITTING TIME

The all-in-one solution reduces fitting time compared to the current under-bonnet auxiliary battery kit by simplifying mounting and wiring.

| Vehicle | Slimline 100 Fitting Time (Battery + Mounting Bracket + Alternator Input Wiring), hrs | |
|---------------|---|----------------|
| | Behind Rear Seat | Under Drawer * |
| HILUX 15+ | 3 | N/A |
| LC79 SC 07+ | 2.5 | N/A |
| LC79 DC 12+ | 2.5 | N/A |
| RANGER 22+ | 3 | 2.5 |
| NAVARA 21+ | 3 | N/A |
| BT50/DMAX 20+ | 3 | N/A |
| LC300 21+ | N/A | 2.5 |
| Everest 22+ | N/A | 2.5 |

* Battery and drawers installed at the same time.

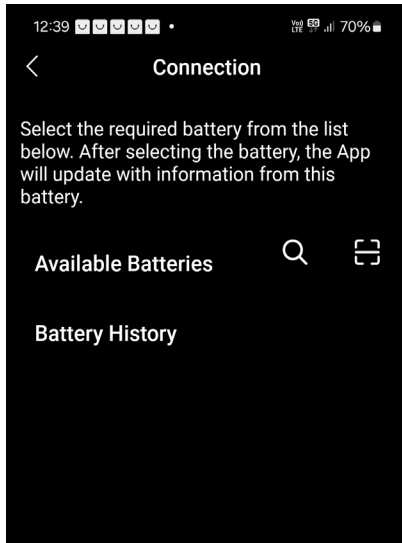
WIRING HARNESSES FOR ARB SLIMLINE 100

| Part Number | Description | Cable Length | Cable Size | Fuse Included |
|-------------|--------------------------------------|--------------|------------|---------------|
| SLB001 | Slimline Battery Solar Input Harness | 4m | 10AWG | 30A Midi |
| 4300110 | Slimline Output Harness | 4m | 8AWG | 60A Midi |
| 4300100 | Alternator Input Wiring Kit | 6m | 6AWG | 60A Midi |



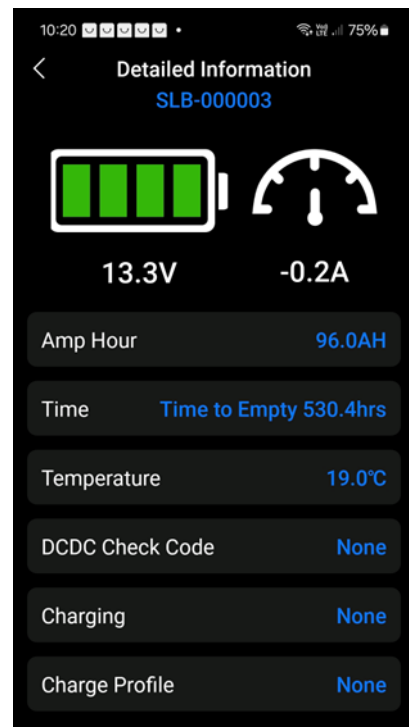
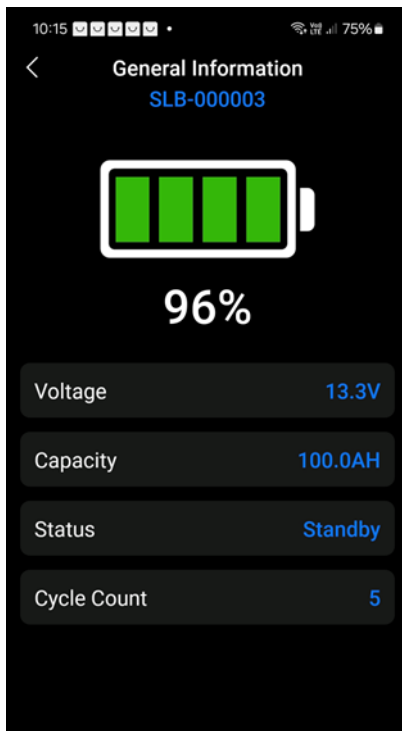
ARB BATTERY CONNECT APP SPECIFIC FEATURES

1. Scan QR code to connect.



QR Code is located on the case

2. General Information screen to provide a summary of key battery information and Detailed Information screen to offer additional details, including Time-to-Empty and Time-to-Full.





PRODUCT BULLETIN

FREQUENTLY ASKED QUESTIONS

Q: Why do we need an Auxiliary Battery System?

A: An auxiliary battery system prevents the main battery from discharging when using 12V(DC) or 240V(AC) devices, such as high-power appliances at camping sites. It also reduces reliance on gas generators, addressing environmental concerns.

Q: Why choose a lithium battery over a lead acid AGM battery?

A: Lithium batteries are lighter (typically weighing half as much as AGM batteries), have up to six times the cycle life, handle heavy loads efficiently, offer comprehensive fault protection and include built-in battery capacity monitoring in premium lithium models.

Q: Why do we need a slimline battery?

A: Slimline batteries are ideal for vehicles with limited engine bay space, allowing installation in compact or unused areas such as behind the rear seat or under a drawer.

Q: Why choose a slimline battery with a built-in DC-DC Charger?

A: A Slimline battery with a built-in DC-DC charger simplifies installation by eliminating the need for a separate mounting bracket, reducing wiring complexity and saving space.

Q: Why choose an ARB Slimline 100?

A: ARB provides a complete solution with the battery, mounting bracket and wiring harness. This integrated approach means you don't need to shop for individual parts, making it easier to complete your auxiliary battery system. The ARB Slimline 100 features lightweight Lithium Iron Phosphate (LiFePO4) cells, high power handling, advanced charging capabilities and comprehensive safety features. It also includes an app for easy monitoring, enhancing the off-road experience and preserving the main vehicle battery's health.

Q: What's the installation process for an ARB Slimline 100?

A:

1. Read through the fitting instructions for the vehicle-specific mounting bracket kit.
2. Install the mounting bracket onto the vehicle.
3. Ensure the power switch on the Slimline 100 battery is off, then mount the battery onto the bracket.
4. Complete the connection using the provided cable kits.

Q: Can I mix and match the ARB Slimline 100 with other batteries?

A: No, mixing different batteries can affect charging performance and overall capacity.

Q: Can I use multiple ARB Slimline 100 batteries to increase energy storage capacity?

A: Yes, multiple ARB Slimline 100 batteries can be connected in parallel to increase capacity.



PRODUCT BULLETIN

Q: What can I power with ARB Slimline 100?

A: The ARB Slimline 100 has a 100Ah capacity (1280Wh) and can handle up to 200A discharge for 20 minutes, making it suitable for devices like 2000W coffee machines, induction cookers and other lighting and charging needs.

Q: Is it safe to install the ARB Slimline 100 in my vehicle?

A: Yes, the ARB Slimline 100 meets the IEC62919:2022 safety standard and includes multiple smart safeguards, such as a soft power switch, internal over-temperature protection, overvoltage protection and protection against accidental short-circuits.

Q: Do I need a DC-DC charger to charge the ARB Slimline 100?

A: No, the ARB Slimline 100 comes with a built-in DC-DC charger, so an additional charger is not required.

Q: Do I need a solar regulator to charge the ARB Slimline 100 if I plan to use solar power?

A: No, the ARB Slimline 100 includes a built-in DC-DC charger, which also supports solar charging, so a separate solar regulator is not necessary.

Q: Where can I mount the battery in my car?

A: The ARB Slimline 100 can be mounted in various locations, such as under drawer systems, behind seats, or in the canopy headboard. For individual cases, please consult with your nearest ARB store.

Q: Do I need a battery monitor?

A: The ARB Slimline 100 comes with an app that allows you to monitor and control the battery from your smartphone, providing real-time updates on its status and condition.