



FITTING INSTRUCTIONS

Part Number: **2821040/2821050**
Product **PRADO 250 FRONT RECOVERY POINTS**
Description:
Suited to **MY24 ON TOYOTA PRADO 250**
vehicle/s:

WARNING

NOTE THE FOLLOWING:

- ◆ This product must be installed exactly as per these instructions using only the hardware supplied.
- ◆ In the event of damage to any recovery point component, contact your nearest authorised ARB stockist. Repairs or modifications must not be attempted.
- ◆ Do not use this product for any vehicle make or model, other than those specified by ARB.
- ◆ Do not remove labels from this recovery point.
- ◆ This product or its fixing must not be modified in any way.
- ◆ The installation of this product may require the use of specialized tools and/or techniques.
- ◆ It is recommended that this product is only installed by trained personnel.
- ◆ These instructions are correct as at the publication date. ARB Corporation Ltd. cannot be held responsible for the impact of any changes subsequently made by the vehicle manufacturer.
- ◆ During installation, it is the duty of the installer to check correct operation/clearances of all components.
- ◆ Work safely at all times.
- ◆ Unless otherwise instructed, tighten fasteners to specified torque.

ARB 4x4 ACCESSORIES

Corporate Head Office

42-44 Garden St
Kilsyth, Victoria
AUSTRALIA 3137

Tel: +61 (3) 9761 6622
Fax: +61 (3) 9761 6807

Australian enquiries
North & South American enquiries
Other international enquiries

sales@arb.com.au
sales@arbusa.com
exports@arb.com.au

www.arb.com.au

GENERAL CARE AND MAINTENANCE

By choosing an ARB Recovery Point, you have bought a product that is one of the most sought after 4WD products in the world. Your recovery point is a properly engineered, reliable, quality accessory that represents excellent value. To keep your recovery point in original condition it is important to care and maintain it following these recommendations:



As part of any pre-trip preparation, or on an annual basis, it is recommended that a thorough visual inspection of the recovery point is carried out, making sure that all bolts and other components are torqued to the correct specification. Replace any components as necessary. This service can be performed by your local authorised ARB Stockist.

FITTING REQUIREMENTS

REQUIRED TOOLS FOR FITMENT OF PRODUCT:

TORQUE WRENCH	METRIC SPANNER SET
METRIC SOCKET SET	TRIM REMOVAL TOOL

HAVE AVAILABLE THESE SAFETY ITEMS WHEN FITTING PRODUCT:

Protective eyewear 	Hearing protection 
---	---

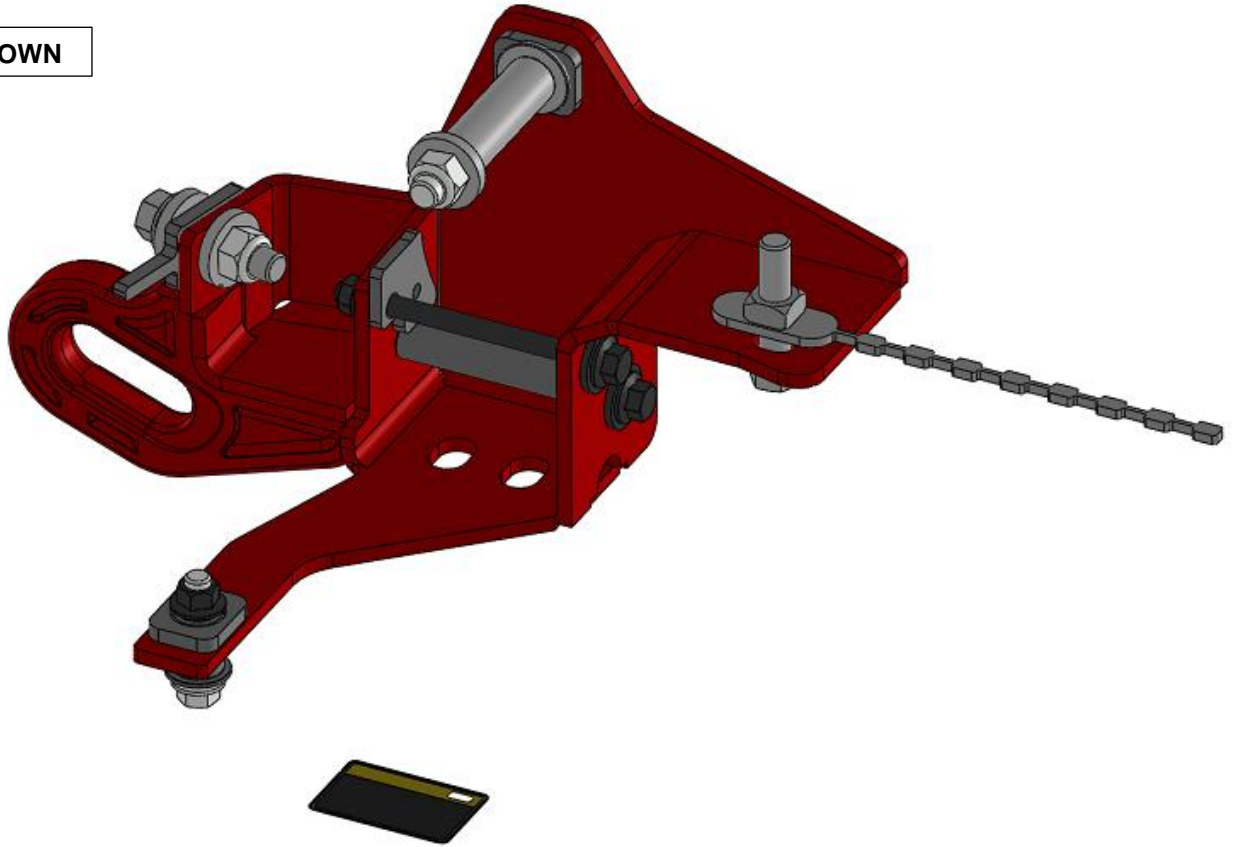
NOTE: 'WARNING' notes in the fitting procedure relate to OHS situations, where to avoid a potentially hazardous situation it is suggested that protective safety gear be worn or a safe work procedure be employed. If these notes and warnings are not heeded, injury may result.

FASTENER TORQUE SETTINGS:

SIZE	Torque Nm	Torque lbft
M8 Gr 10.9	32Nm	23lbft
M10 Gr 11.9	54Nm	40lbft
M12 10.9	92Nm	68lbft
M12 (OEM Bolts)	102Nm	75lbft

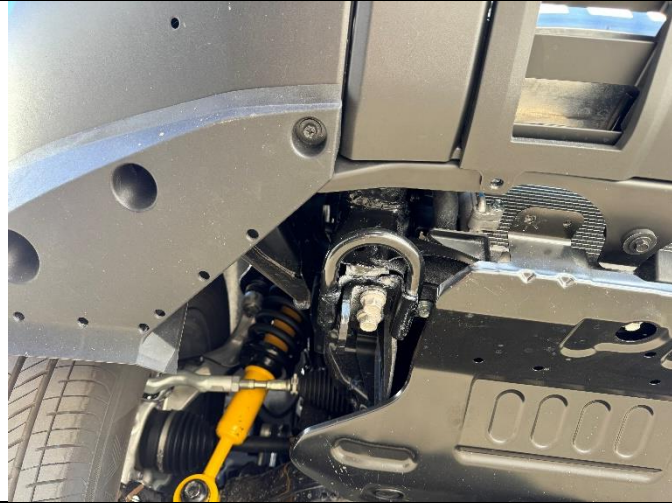
PARTS LISTING

RHS SHOWN



PART NO.	QTY.	DESCRIPTION
2125484	1	STICKER RECOVERY POINT
3197035	1	PLATE PACKER 6MM 21MM ID
3197036	1	PACKER 5MM PRADO 250 RP
3197050	1	NUT STICK M12 X 185MM
4581303	2	WASHER FLAT M8X25.4X3
4584377	4	WASHER FLAT M12X30X5
4722094	1	TUBE CRUSH 14.5OD M8 74MM
4722095	1	TUBE CRUSH CHASSIS M12 67.5MM
4722096	1	CRUSH TUBE 19.5MM OD M12X24MM
6151478	1	NUT FLANGE M10X1.25
6151528	2	NUT HEX NYLOC M12X1.75
6151548	2	NUT FLANGE M8X1.25
6151887	1	SCREW HXHD FL M10x1.25x45
6152066	2	BOLT HXHD FL M12X1.75X50
6152092	1	BOLT HXHD M12X1.75X110
6152279	2	BOLT HXHD FL M8X1.25X110

FITTING PROCEDURE – RHS SHOWN

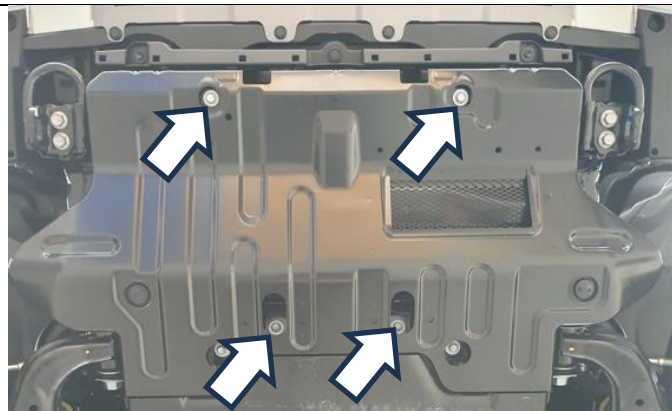


1. Remove tow hooks on the side the recovery point is to be fitted. Retain fasteners for refitment.

IF FITTING TO BULL BAR PLEASE SKIP TO STEP 8.



2. Remove OEM splash panel by undoing three screws from underneath and unclipping three scrivenets from the wheel arch liner. Retain for refitment.



3. Remove OEM under panel by undoing four M8 Bolts. Retain for refitment.



4. Remove two screws and one clip retaining air deflector moulding. Retain for refitment.



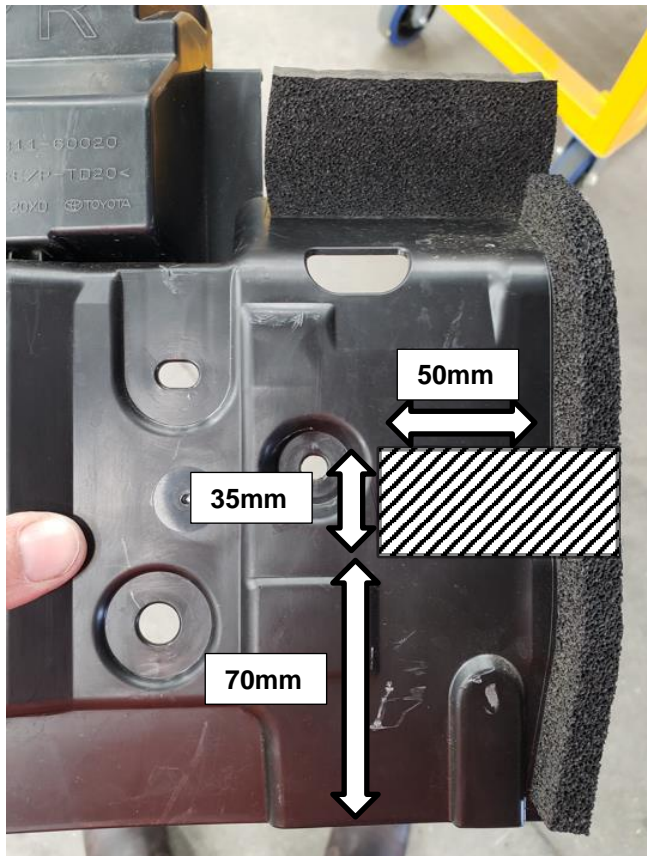
5. Using a short flat blade screwdriver remove the screw cover on top of the crash beam. Access from under front outside corner of bumper fascia. Retain for refitment.



6. Carefully manoeuvre the air deflector to the middle of the vehicle and then lower to remove. Retain for refitment.

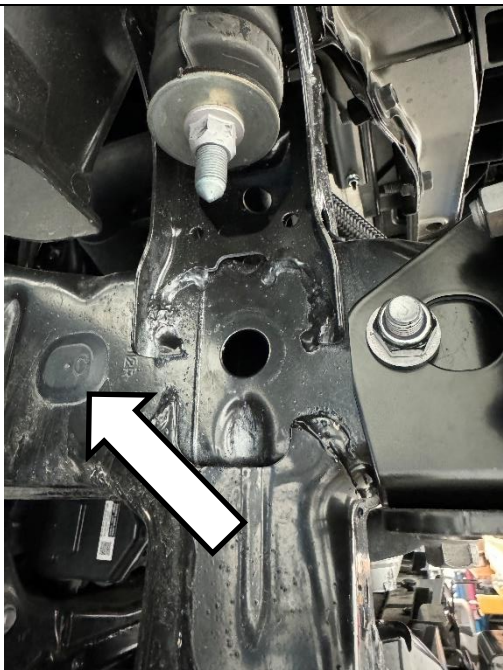
7. Mark up air deflector using measurements shown below. Using an oscillating multi-tool remove material and deburr edges.

BEFORE:



AFTER:





8. Remove outer plastic cap on third chassis hole. Retain for refitment.



9. Remove plastic trim panel underneath cooling stack by removing five scrivenets and disengaging moulded clip. Retain for refitment.



IF FITTING TO BULL BAR SKIP TO STEP 15



10. Undo and remove M6 Bolts either side of the chassis rail. Retain for refitment.



11. Carefully peel back bumper to access five fasteners retaining bumper bracket to crash beam. Remove and retain fasteners.



12. Using dimensions provided, centre punch then drill a $\text{Ø}13\text{mm}$ hole in the bumper retaining bracket. protect raw edge with paint.

BEFORE:



AFTER:



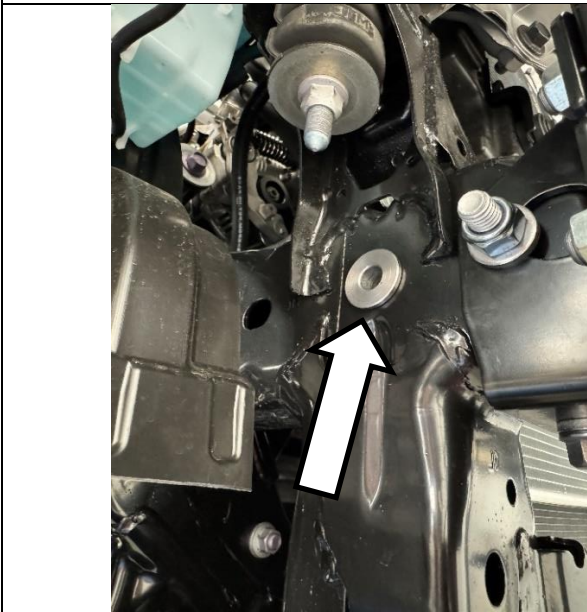


13. Reinstall bumper retaining bracket with original hardware. Torque to Specification.

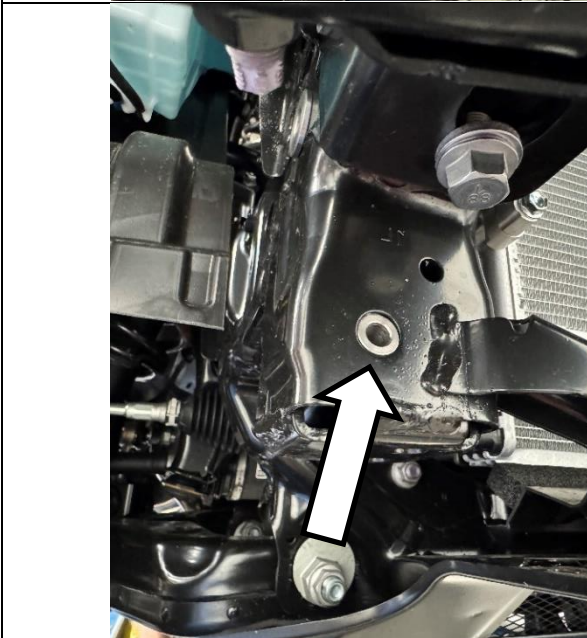
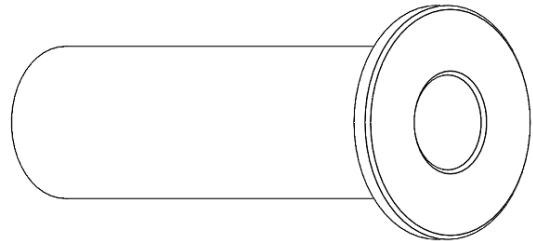


M12x1.25 PC11.9 – 102Nm

14. Reinstall air deflector with original scrivets.



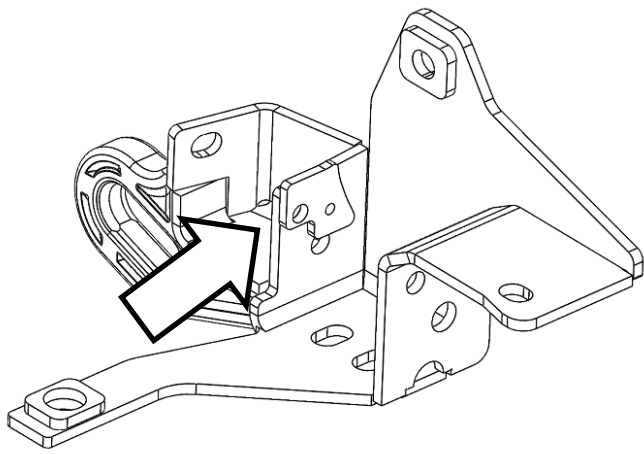
15. Identify and assemble crush tube into the second chassis hole.



16. Identify and assembly M8 crush tube into chassis hole shown.

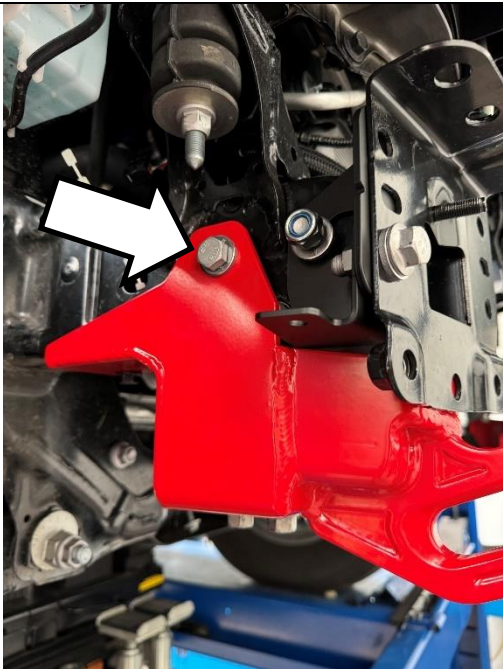
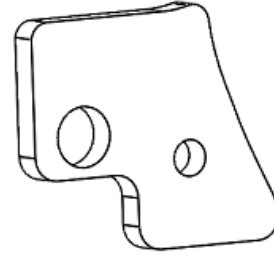
Take care not to drop into chassis.



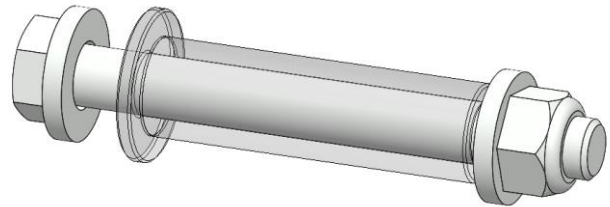


Note – vehicle not shown for clarity.

17. Identify packer plate and then position in between chassis and recovery point as both are presented to the vehicle chassis.



18. Loosely assemble M12x1.75x110 bolt, nyloc nut and hardened washers through the crush tube installed in step 15.



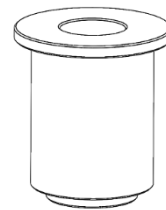
19. Loosely install M12 fasteners removed in Step 1.



20. Loosely assemble two M8x110 bolts and hardened washers from the rear and fasten with flange nuts.



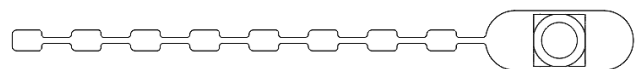
21. Identify bush and assemble bush up through the crossmember and the plate as shown.

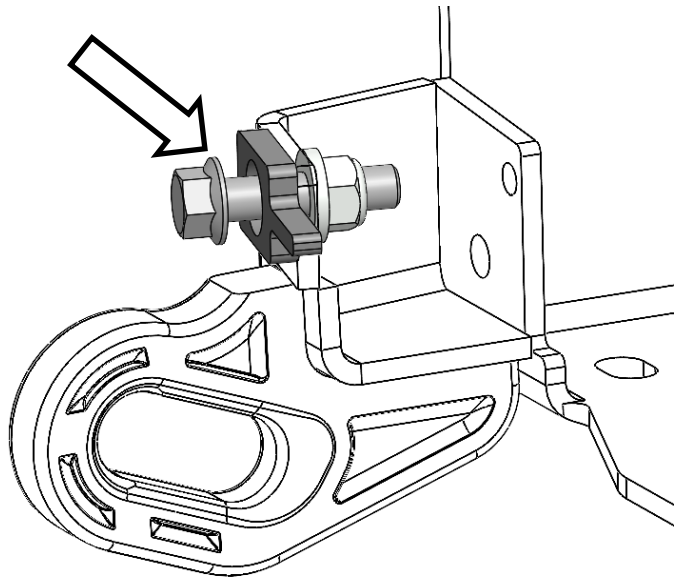


22. Assemble M10x1.25x45 flange bolt through the bush fitted in previous step. Fasten an M10 flange nut on top.



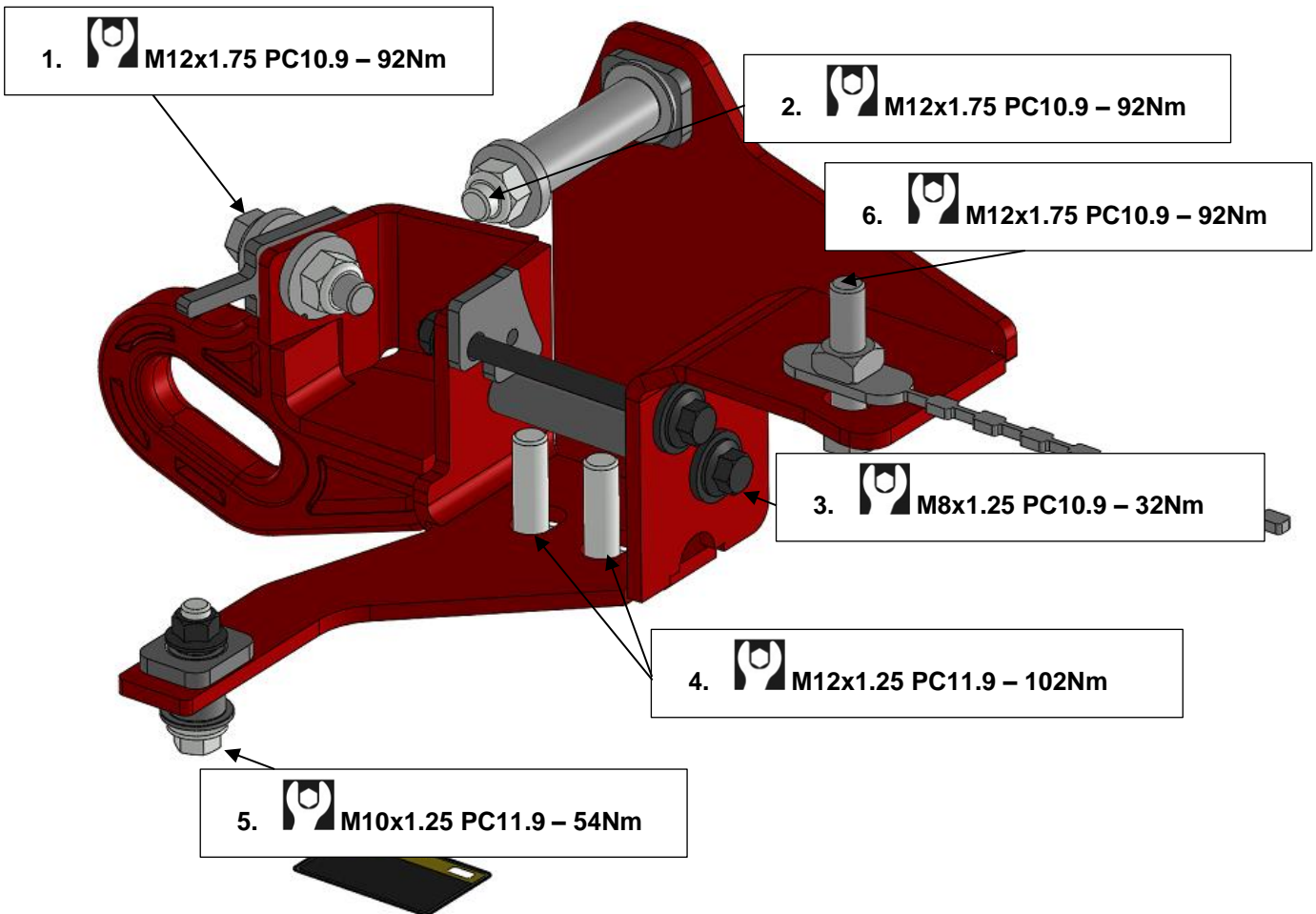
23. Install nut plate through chassis hole and fasten M12x1.75x50 flange bolt as shown. Break off nut plate tail using vice grips or similar and re-install plastic chassis cover removed in Step 8.





24. Install M12x1.75x50 Flange bolt through the front of the chassis and through an 6mm packer as shown. Fasten with a nyloc nut and washer.

25. Torque hardware to specification in order shown.

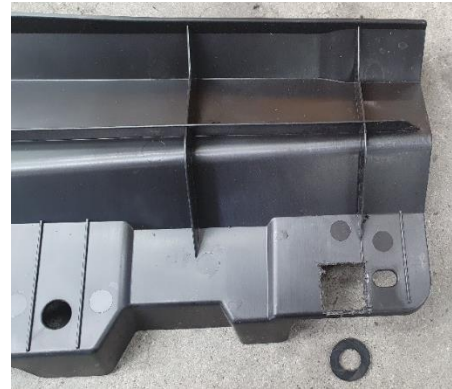




26. Locate trim panel removed in step 9.

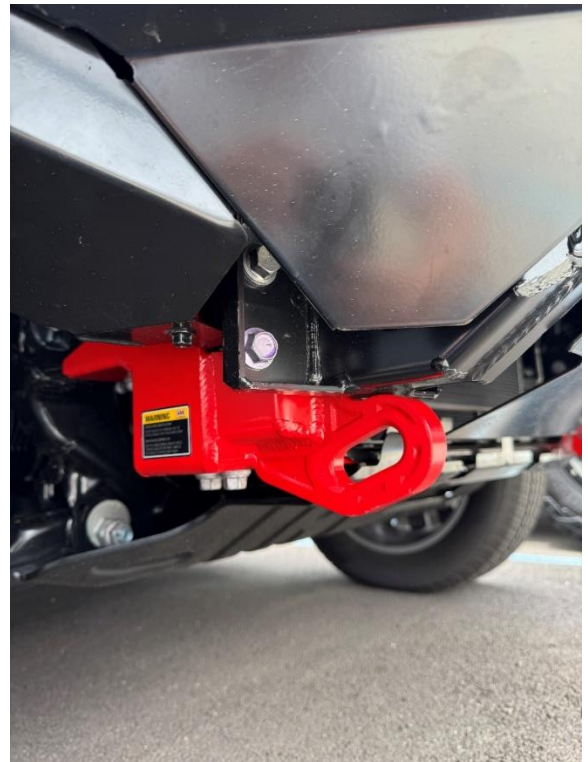
Using one of the supplied M8 Washers as a template, mark around the centre of the hole, repeat on other side.

Using an oscillating multitool, cut out the marked area as shown, repeat on the other side.



- 27. Refit trim panel using original scrivenets.
- 28. Refit both M6 bolts removed in Step 10 if applicable.
- 29. Refit under panel removed in Step 3 with original M8 hardware.
- 30. Refit splash panel removed in Step 2 with original screws & scrivenets.

31. Adhere warning label in position shown.



FITTED PRODUCT

