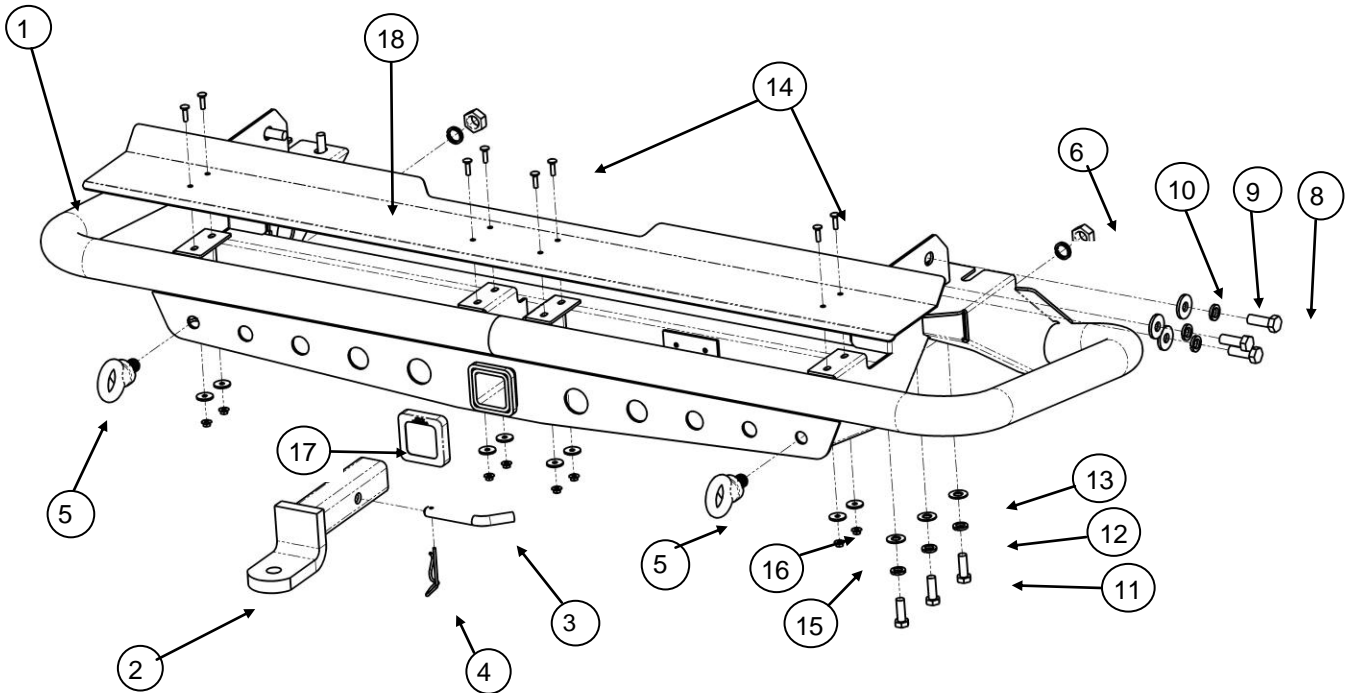


# ARB FITTING INSTRUCTIONS

## ARB NISSAN NAVARA D40

### REAR STEP TOW BAR PART No 3638030



ITEM	PART No	QTY	DESCRIPTION
1	3638030	1	NISSAN NAVARA D40 REAR STEP TOW BAR
2	4761110	1	SHAFT ASSEMBLY TOW BALL
3	55010	1	TOW BAR PULL PIN
4	55020	1	TOW BAR PULL PIN SPRING CLIP
5	6151111	2	BOLT LIFTING EYE
6	6151161	2	NUT M20 ZINK PLATED
8	6151099	6	BOLT M14 X 1.5 X 40mm
9	4584298	6	WASHER FLAT M14 X 4mm GOLD
10	6151064	6	WASHER SPRING M14
11	6151095	12	BOLT M12 X 1.25 X 35mm
12	4581070	12	WASHER FLAT M12
13	4581050	12	WASHER SPRING M12
14	6151200	8	BOLT M6 X 25mm DOME HEAD
15	6151128	8	NUT FLANGE M6
16	4581084	8	WASHER PANEL M6
17	4781310	1	RSTB PLASTIC SLEEVE COVER
18	3193754	1	PLATE CHECKER NAVARA D40 RSTB
19	2125461	1	TOW WARNING LABEL

Tools required: Basic tool kit, 10, 19, and 22mm sockets, Silicone sealant and Loctite 262 or equivalent.



1. If the vehicle is fitted with either a rear step or a tow bar, remove before commencing.

NOTE: If fitting this rear step to a vehicle where there is no rear valance panel fitted, a separate panel (part No 3538020) can be purchased from your ARB stockist.



2. Fit the eye bolts (item 5) to the rear step through the outer holes as shown using the M20 nuts (item 6) with Loctite 262 applied to the threads.

Torque to 77Nm



3. Using a hammer, carefully knock flat the tab on both the left and right hand side chassis rails.

*Protective eyewear should be worn*





4. With the help of another person or a suitable lifting device, carefully lift the rear bar into place and align with the holes in the chassis.



5. **For vehicles up to 2009.**  
Using three M14 bolts, (item 8) three M14 flat washers (item 9) and three M14 spring washers (item 10) for each side, attach the rear bar to the side of the chassis.

**For vehicles 2009 on.**

- Using three M12 bolts, (item 11) three M12 flat washers (item 12) and three M12 spring washers (item 13) for each side, attach the rear bar to the side of the chassis.

***DO NOT TIGHTEN***



6. Using three M12 x 35mm bolts, (item 11) three M12 flat washers (item 12) and three M12 spring washers (item 13) for each side, attach the rear bar to the underneath of the chassis.

***DO NOT TIGHTEN***



- Align the rear bar with the rear quarter panels and the back of the vehicle and tighten all the bolts to specified torque.

Torque M12 to 77Nm  
Torque M14 to 121Nm



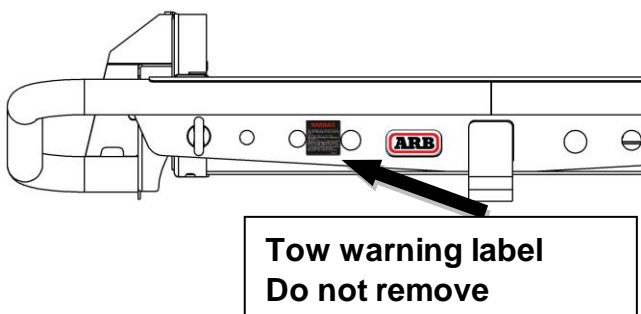
- Apply a thin bead of silicon along the rear bar as shown. Assemble the aluminium checker plate (item 18) using the eight M6 x 25mm dome head bolts, (item 14) M6 panel washers (item 16) and M6 flange nuts (item 15) provided. Tighten to specified torque

Torque M6 to 7Nm



- Fit the plastic cover (item 17) over the protruding sleeve at the rear of the step.

Picture left is shown with optional rear panel kit (part No 3538020) for ST-X models.



- Add the tow warning label to the bar as shown.

***Note: This label must be not be removed***